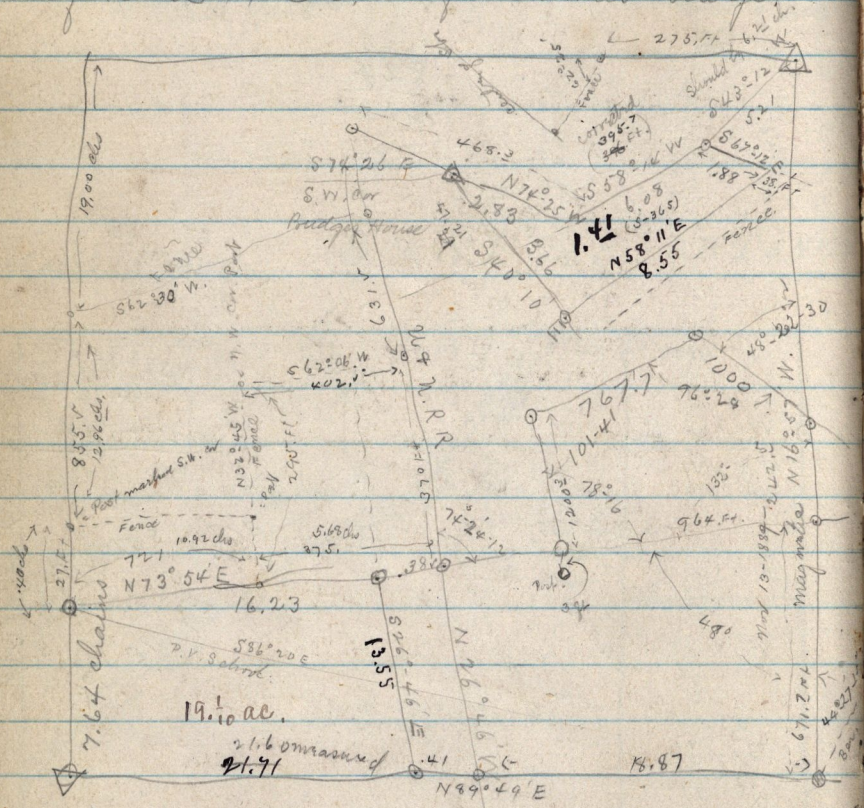


May 22 - 1885

Survey at North Ogden on S.W. 1/4  
 Sec 24 T.7. N. R. 2. W. Brg. at S.W. cor  
 of said 1/4 Sec. - for Thomas Budge.



To be conveyed by John Mowbr,

Dec. 1895. I surveyed as following;  
 S.W. 1/4 Sec. 24 T.7. N. R. 2. W.  
 Brg. 8.04 chs. N. of S.W. Cor. and 10.69 ch N73°54'E  
 from S.W. Cor. thence N73°54'E 5.35 chs, N26°46'W  
 5.16 chs par. to Ry, S62°W. 5.63 chs S32°45'E  
 4.07 chs to Crq. 2.53 ac.

also a tract which includes the above described.

Brg. 8.04 chs N. of S.W. Cor. ad. 1/4 Sec, N. 12.96 chs N62°5'

